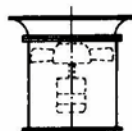
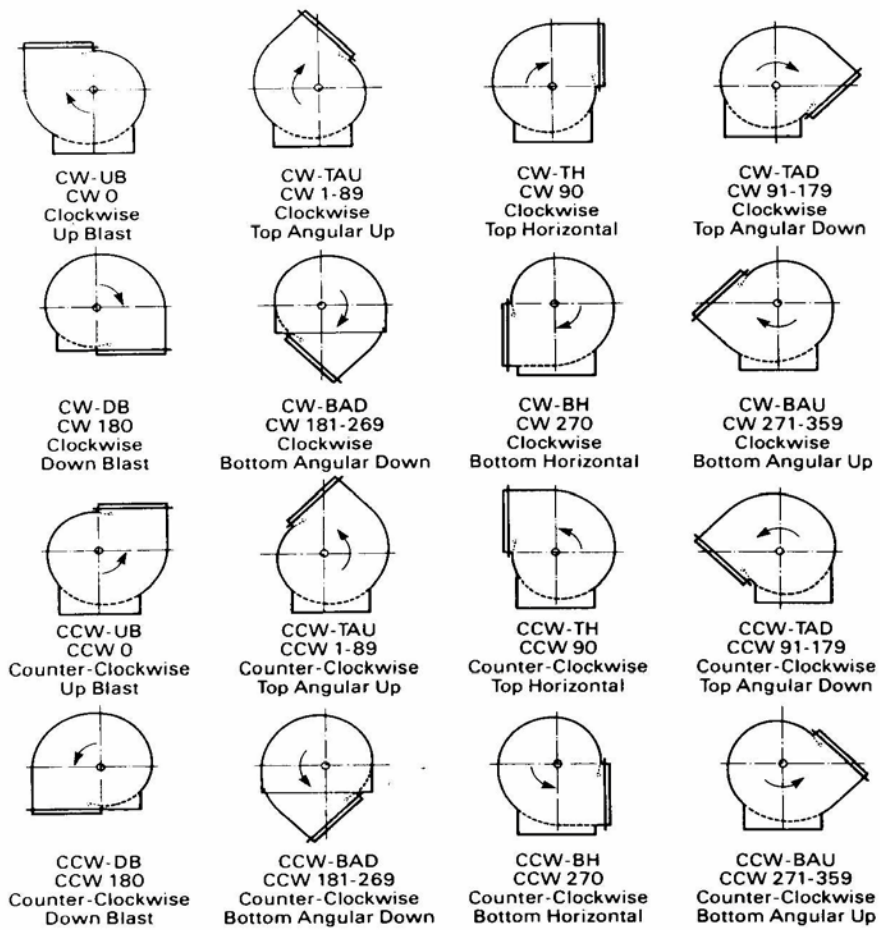
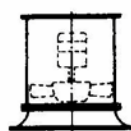


Fan Geometry

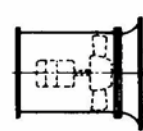
Fan Rotation and Discharge Positions



Down Blast

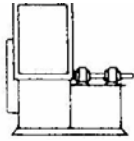


Up Blast

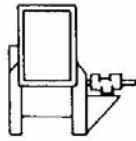


Horizontal

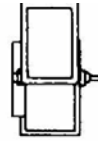
Centrifugal and Axial Fan Arrangements



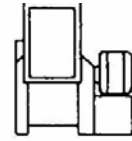
Arr. 1 SI
For belt drive or direct connection. Impeller overhung. Two bearings on base.



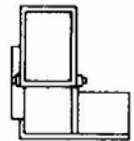
Arr. 2 SI
For belt drive or direct connection. Impeller overhung. Bearings in bracket supported by fan housing.



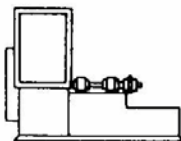
Arr. 3 SI or DI
For belt drive or direct connection. One bearing on each side supported by fan housing or on independent pedestals.



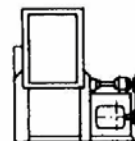
Arr. 4 SI
For direct drive. Impeller overhung on motor shaft. No bearings on fan. Motor mounted on base or supported by fan housing.



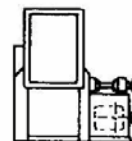
Arr. 7 SI or DI
For belt drive or direct connection. Arrangement 3 plus base for motor.



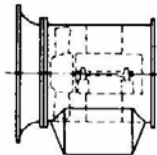
Arr. 8 SI
For belt drive or direct connection. Arrangement 1 plus extended base for motor.



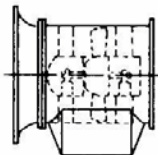
Arr. 9 SI
For belt drive. Impeller overhung, two bearings, with motor outside base.



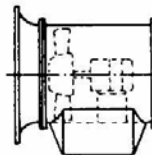
Arr. 10 SI
For belt drive. Impeller overhung, two bearings, with motor inside base.



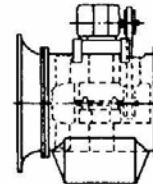
Arr. 1
For belt drive or direct connection. Impeller overhung. Two bearings on internal supports. Drive through inlet.



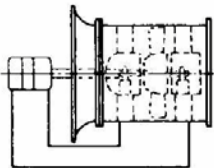
Arr. 3
For belt drive or direct connection. Impeller between bearings that are on internal supports. Drive through inlet.



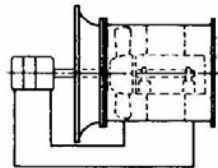
Arr. 4
For belt drive. Impeller overhung on motor shaft. No bearings on fan. Motor on internal supports.



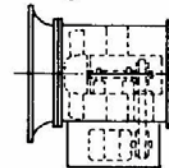
Arr. 9
For belt drive. Impeller overhung. Two bearings on internal supports. Motor on casing. Drive through belt fairing.



Arr. 7
For belt drive or direct connection. Arr. 3 plus common base for motor and fan.



Arr. 8
For belt drive or direct connection. Arr. 1 plus common base for motor and fan.



Arr. 10
For belt drive. Arr. 9 except motor is mounted on separate base.